

DelMonitor® Series 83



Valve Position Monitor

Features and Specifications

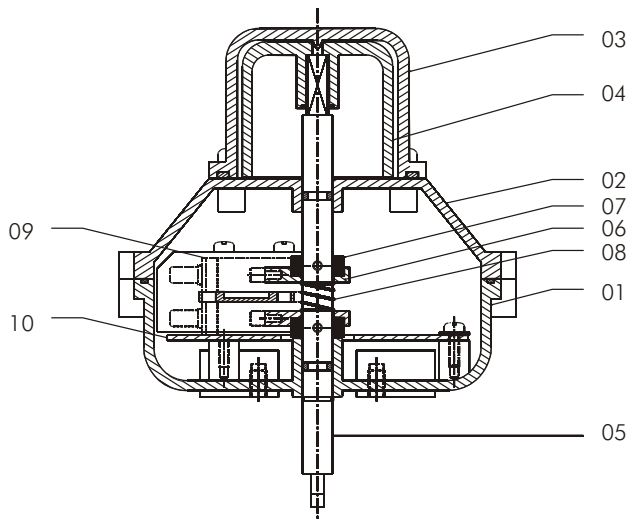
- ❖ Aluminum die cast powder coated body
- ❖ High corrosion resistance
- ❖ Polycarbonate dome
- ❖ Fully adjustable spring loaded cams for easy setting
- ❖ Special printed circuit board to eliminate all wiring from the switch elements to terminals
- ❖ Protection against short circuit
- ❖ (2) 1/2" conduit entries
- ❖ Namur mounting as standard
- ❖ Weather proof IP 65 / IP 67
- ❖ Temperature range : -20°C to 80°C
4°F to 176°F

Standard Options Available

Cable Entry : 1/2" NPT (2)
: M20 x 1.5 (2 by adapter)
: 3/4" ET (2 by adapter)

Brackets : Open (Metal)

Body Material : Aluminum

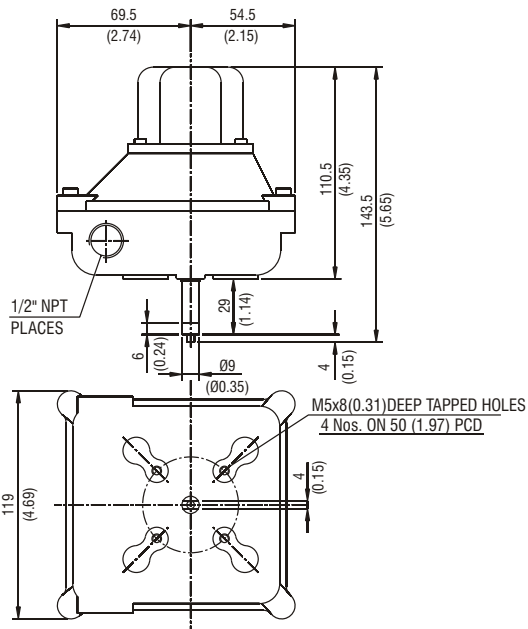


Sr.No.	COMPONENT DESCRIPTION	MATERIAL / MAKE	QTY
01	BODY	ALUMINUM	1
02	TOP COVER	ALUMINUM	1
03	DOME COVER	POLYCARBONATE	1
04	DOME INDICATOR	ABS PLASTIC	1
05	SHAFT	SS 303	1
06	CAM	ABS PLASTIC	2
07	CAM GEAR	DELIN	2
08	SPRING	SPRING STEEL	1
09	LIMIT SWITCH	HONEYWELL	2
10	PCB	GLASS EPOXY	1

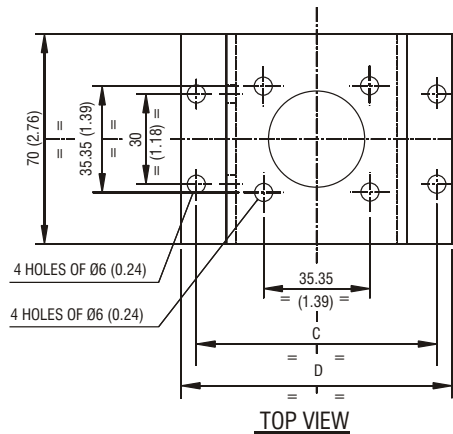
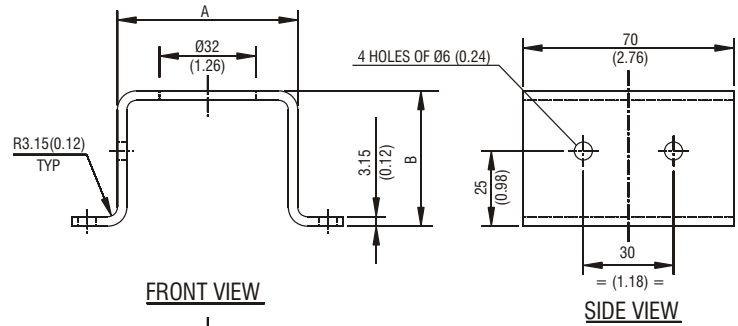
LIMIT SWITCH				
SWITCH TYPE	SWITCH MAKE	SWITCH MODEL	RATING	QTY
SPDT	HONEYWELL	V5C010EB30	10 Amps, 125 or 250 V AC, 220 V DC	2
			NO / NC	
INDUCTIVE SENSOR				
RECTANGULAR	P & F	NJ2-V3-N	8V DC, 3 mA, Namur, NC	2
		NBB3-V3-Z4	5 - 60 V DC, 100 mA, 2 Wire, NO	
CYLINDRICAL		NJ2-12-GM-N	8V DC, Namur, NC	2
		NCB2-12GM35-NO	8V DC, 3 mA, Namur, NC	
		NCB4-12GM40-Z0	5 - 60 V DC, 100 mA, 2 Wire, NO	
		NCN4-12GM35-NO	8V DC, 3 mA, Namur, NC	
SLOTTED		SLOTTED SJ 3.5 N	8V DC, 3 mA, Namur, NC	2



DIMENSIONS: LIMIT SWITCH



DIMENSIONS: METAL BRACKET



DIMENSIONS IN mm				
ACTUATOR SIZE	A	B	C	D
045 TO 100	60	45	80	90
115 TO 200	85	55	130	145

DIMENSIONS IN INCH				
ACTUATOR SIZE	A	B	C	D
045 TO 100	2.36	1.77	3.15	3.54
115 TO 200	3.35	2.17	5.12	5.71

Note : All dimensions given in brackets are in INCHES

